

Reinforce Your Pipes From the Inside Out

Internal Pipe Reinforcement with Composites



Repair, Reinforce, Or Rebuild

With more than 10 times the strength-to-weight ratio of steel, composite carbon fiber can repair and structurally rehabilitate even the most badly degraded buried pipes. Our solutions range from spot repairs to building a structurally independent pipe within the host pipe.



Repairs Available For All Common Pipe Materials

With solutions ranging from structurally independent piping for Prestressed Cylindrical Concrete Pipes (PCCP) to reinforcement of corroding steel pipes, allow our team of pipe reinforcement experts to help you determine the best solution for your system.



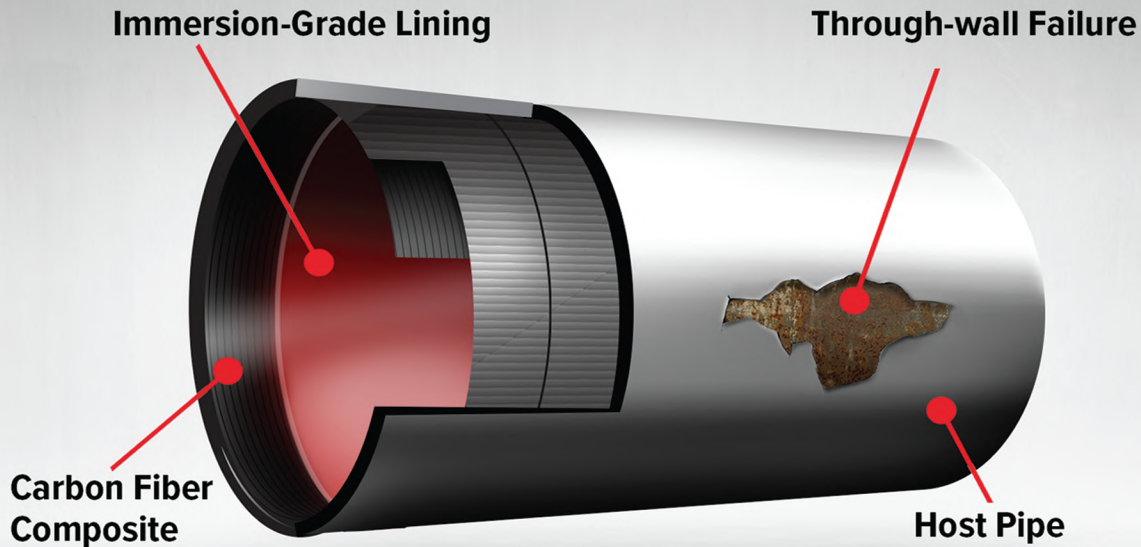
50-Year Life Extension. Maintenance Free.

We provide the greatest certainty of outcome in the industry. Engineered solutions are available that provide more than 50 years of additional service life, no matter how badly degraded your current piping system may be.



Reliability By Design

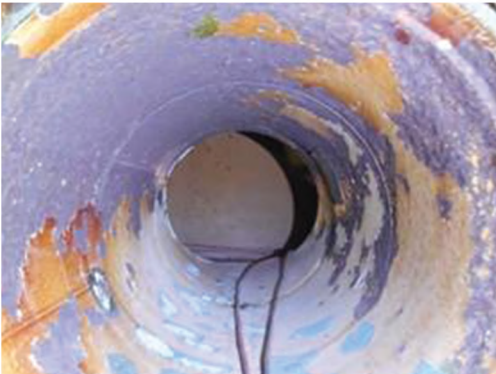
Customized composite solutions are engineered for the specific needs of your piping system. Our team will help design comprehensive installation and quality control guidelines to ensure the best possible outcome,



We Are Composite Solutions

Carbon fiber composite hand lay-up systems offer the **strongest repair option on the market**. Unlike cured-in-place piping (CIPP), our composite technology provides a **fully structural reinforcement** option with the ability to restore or even surpass the design requirements of your system. Issues with **through-wall failures, systemic corrosion, or joint failures can be solved** with a composite reinforcement solution engineered to your system needs.

Installation Spotlight



Before: A Nuclear power facility had a 54-inch cooling water gate valve that failed inspection due to a failed coating and subsequent steel loss. A quick, long-lasting repair was needed.



During: The pipe section was grit-blasted to remove the failed coating, a putty was applied then an aerospace-grade, carbon fiber composite was installed by hand lay-up.



After: The installation was done during a short outage window. The carbon fiber is engineered to withstand the full internal pressure of the pipe and eliminate further corrosion.