

FEATURED PROJECT

Non-Skid Walkway for Manufacturing Facility

CUSTOMER

Silent Aire

APPLICATION TEAM

Internal Coating Team

SYSTEM

FRP 200 Saturant, HDF 150 AS

LOCATION

Arizona

DATE OF APPLICATION

June 2021

SUBSTRATE

Concrete

PROBLEM

A 250,000 sq.ft facility that manufactures critical server units needed a highly durable coating system on the walkways in their facility due to the constant foot and heavy equipment traffic. The existing walkways were identified with a stripe applied using a pressure-sensitive adhesive that showed considerable wear after only a year. The new coating system had to clearly delineate the proper walk paths, provide a non-slip finish and provide excellent adhesion to the base concrete. The facility also mandated an aesthetically pleasing finished coating system applied with minimal disruption to its operations.



Figure 1 Walkway Taped Off After Surface Preparation

SOLUTION

A penetrating sealer was used to reduce pinholes in the final coat and to increase the overall adhesion value. The overall size of the grit incorporated into the topcoat, HDF 150 AS, was reduced to provide a durable, easy-to-apply and, aesthetically pleasing floor coating with a less aggressive finish.

INSTALLATION STEPS:

1. The floor was prepared via pressure washing at 3,000 psi.
2. The FRP 200 Saturant was applied via roller at 3 – 5 mils.
3. Endura's EX-2C Yellow Urethane coating was applied at 3 – 5 mils via roller to provide added visibility.
4. The Yellow coating was then taped off prior to the application of the topcoat.
5. HDF 150 AS was applied via a squeegee and backroll technique at 10 – 15 mils.
6. The material was left to cure for 12 hours before foot traffic.

Each section of walkway was completed over the weekend to minimize disruption to the facility.

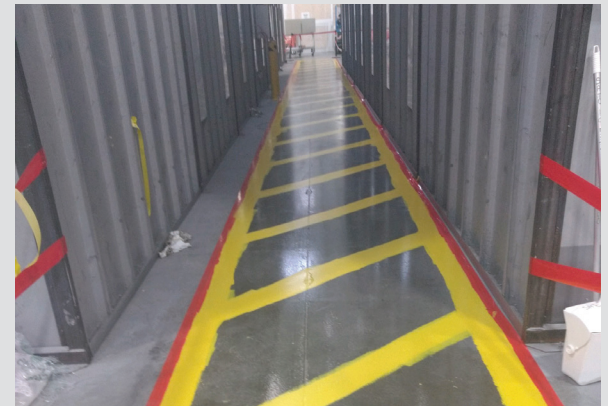


Figure 2 Application of the EX-2C Yellow Stripe Coat After the FRP 200 Sealer

BENEFITS

- A single coat of HDF 150 AS provides an anti-slip finish without the need to broadcast.
- HDF 150 AS contains aluminum oxide aggregate for maximum durability.
- The penetrating sealer provides more than 500 psi adhesion to concrete.
- The entire project was finished over the weekend with no issues or delays.

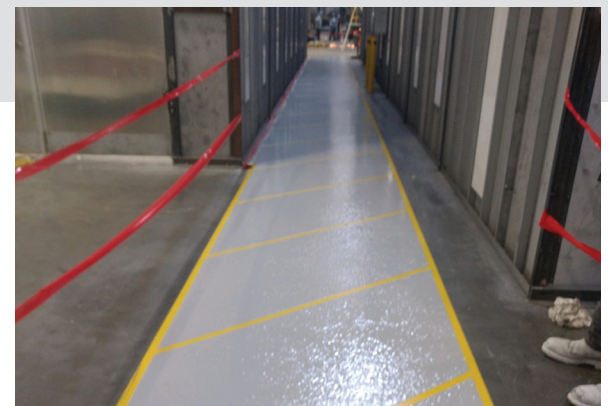


Figure 3 After Application of the HDF 150 AS Anti-Slip Coating